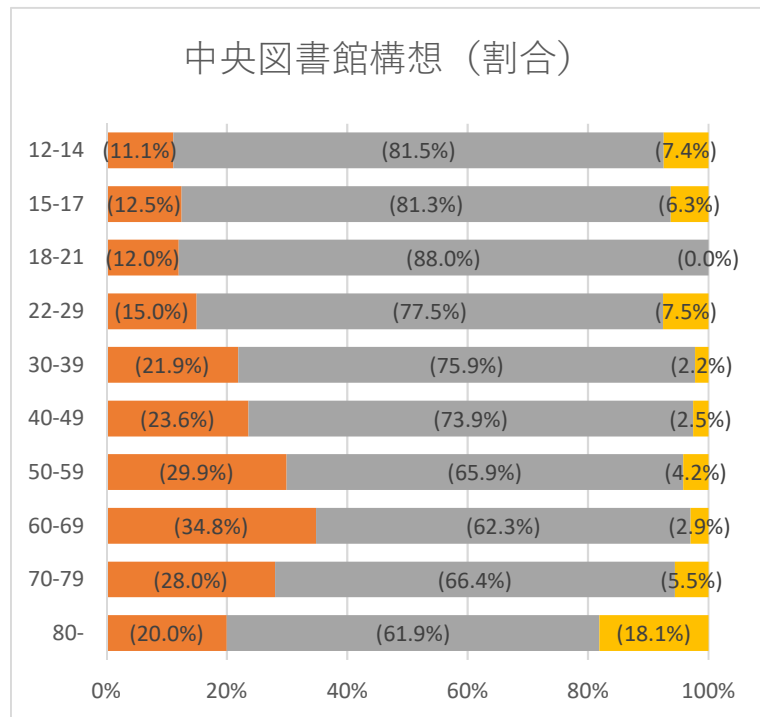
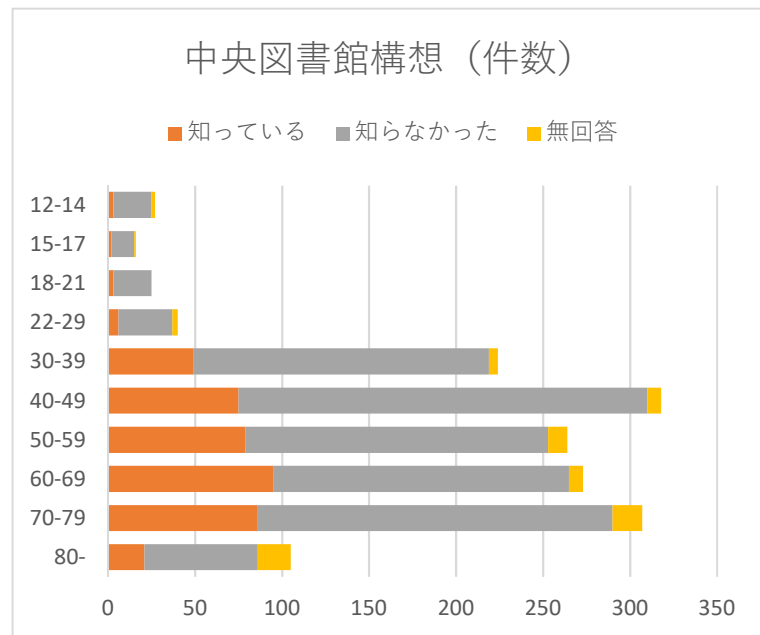


void

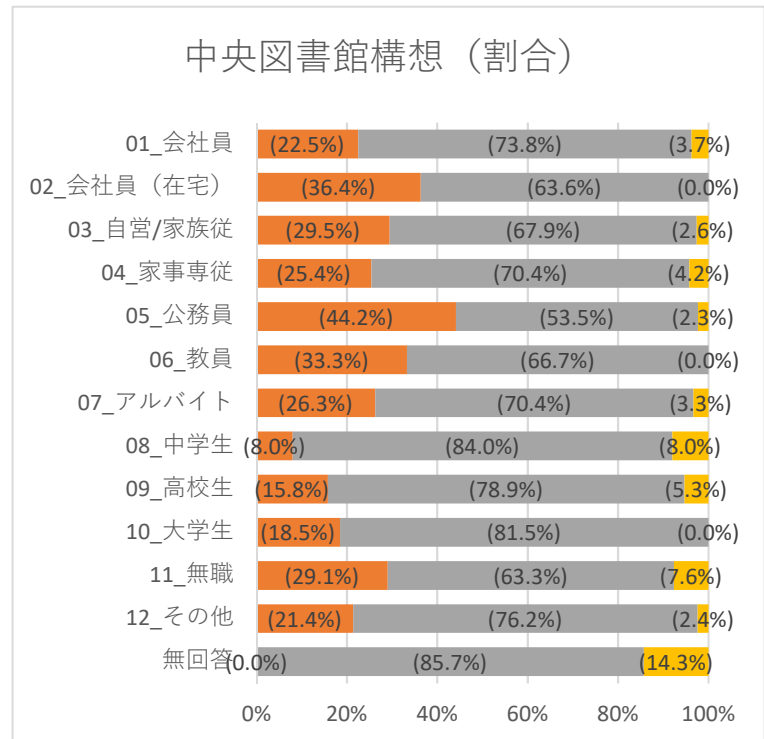
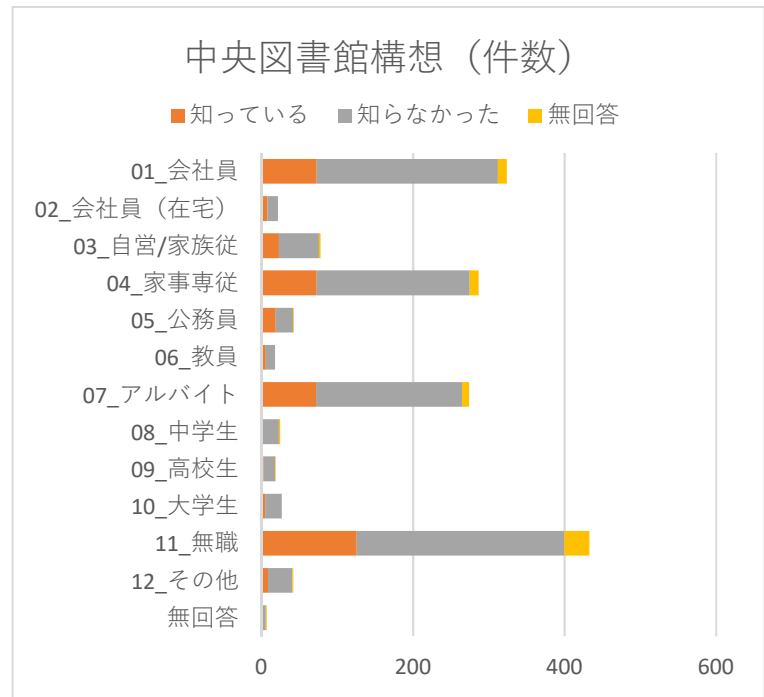
A1年齢	B8a中央構想						
	知っている		知らなかった		無回答		全体の割合
	件数	割合	件数	割合	件数	割合	
12-14	3	(11.1%)	22	(81.5%)	2	(7.4%)	27 (100.0%)
15-17	2	(12.5%)	13	(81.3%)	1	(6.3%)	16 (100.0%)
18-21	3	(12.0%)	22	(88.0%)		(0.0%)	25 (100.0%)
22-29	6	(15.0%)	31	(77.5%)	3	(7.5%)	40 (100.0%)
30-39	49	(21.9%)	170	(75.9%)	5	(2.2%)	224 (100.0%)
40-49	75	(23.6%)	235	(73.9%)	8	(2.5%)	318 (100.0%)
50-59	79	(29.9%)	174	(65.9%)	11	(4.2%)	264 (100.0%)
60-69	95	(34.8%)	170	(62.3%)	8	(2.9%)	273 (100.0%)
70-79	86	(28.0%)	204	(66.4%)	17	(5.5%)	307 (100.0%)
80-	21	(20.0%)	65	(61.9%)	19	(18.1%)	105 (100.0%)
<b>総計</b>	<b>419</b>	<b>(26.2%)</b>	<b>1106</b>	<b>(69.2%)</b>	<b>74</b>	<b>(4.6%)</b>	<b>1599 (100.0%)</b>

A1：年齢  
 A2：職業  
 A3：居住地  
 B8：中央館構想に関する設問



void

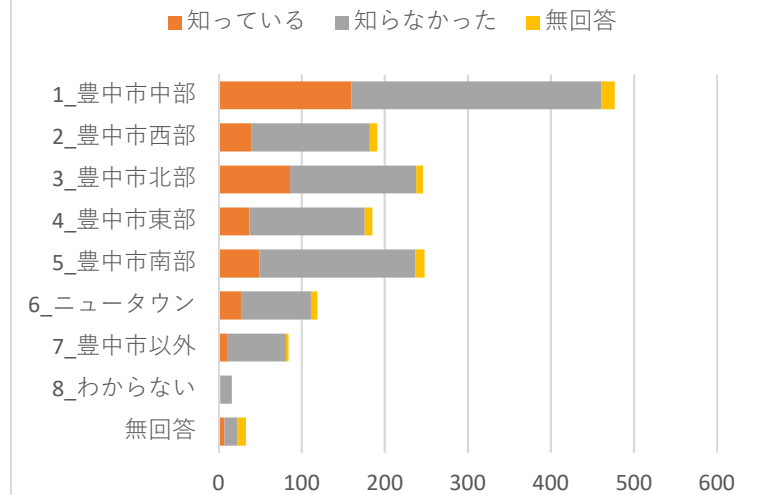
A2職業	B8a中央構想						
	知っている		知らなかった		無回答		全体の割合
	件数	割合	件数	割合	件数	割合	
01_会社員	73	(22.5%)	239	(73.8%)	12	(3.7%)	324 (100.0%)
02_会社員 (在宅)	8	(36.4%)	14	(63.6%)		(0.0%)	22 (100.0%)
03_自営/家族従	23	(29.5%)	53	(67.9%)	2	(2.6%)	78 (100.0%)
04_家事専従	73	(25.4%)	202	(70.4%)	12	(4.2%)	287 (100.0%)
05_公務員	19	(44.2%)	23	(53.5%)	1	(2.3%)	43 (100.0%)
06_教員	6	(33.3%)	12	(66.7%)		(0.0%)	18 (100.0%)
07_アルバイト	72	(26.3%)	193	(70.4%)	9	(3.3%)	274 (100.0%)
08_中学生	2	(8.0%)	21	(84.0%)	2	(8.0%)	25 (100.0%)
09_高校生	3	(15.8%)	15	(78.9%)	1	(5.3%)	19 (100.0%)
10_大学生	5	(18.5%)	22	(81.5%)		(0.0%)	27 (100.0%)
11_無職	126	(29.1%)	274	(63.3%)	33	(7.6%)	433 (100.0%)
12_その他	9	(21.4%)	32	(76.2%)	1	(2.4%)	42 (100.0%)
無回答		(0.0%)	6	(85.7%)	1	(14.3%)	7 (100.0%)
<b>総計</b>	<b>419</b>	<b>(26.2%)</b>	<b>1106</b>	<b>(69.2%)</b>	<b>74</b>	<b>(4.6%)</b>	<b>1599 (100.0%)</b>



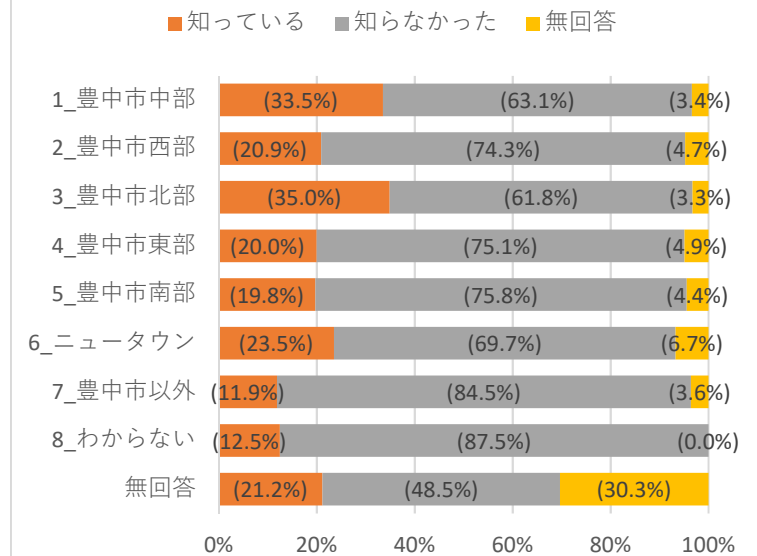
void

A3居住地	B8a中央構想						
	知っている		知らなかった		無回答		全体の割合
	件数	割合	件数	割合	件数	割合	
1_豊中市中部	160	(33.5%)	301	(63.1%)	16	(3.4%)	477 (100.0%)
2_豊中市西部	40	(20.9%)	142	(74.3%)	9	(4.7%)	191 (100.0%)
3_豊中市北部	86	(35.0%)	152	(61.8%)	8	(3.3%)	246 (100.0%)
4_豊中市東部	37	(20.0%)	139	(75.1%)	9	(4.9%)	185 (100.0%)
5_豊中市南部	49	(19.8%)	188	(75.8%)	11	(4.4%)	248 (100.0%)
6_ニュータウン	28	(23.5%)	83	(69.7%)	8	(6.7%)	119 (100.0%)
7_豊中市以外	10	(11.9%)	71	(84.5%)	3	(3.6%)	84 (100.0%)
8_わからない	2	(12.5%)	14	(87.5%)		(0.0%)	16 (100.0%)
無回答	7	(21.2%)	16	(48.5%)	10	(30.3%)	33 (100.0%)
<b>総計</b>	<b>419</b>	<b>(26.2%)</b>	<b>1106</b>	<b>(69.2%)</b>	<b>74</b>	<b>(4.6%)</b>	<b>1599 (100.0%)</b>

## 中央図書館構想（件数）

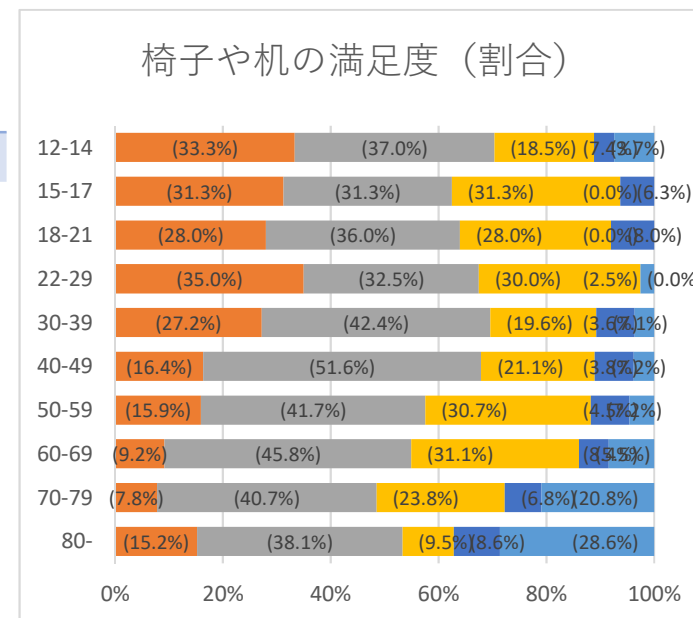
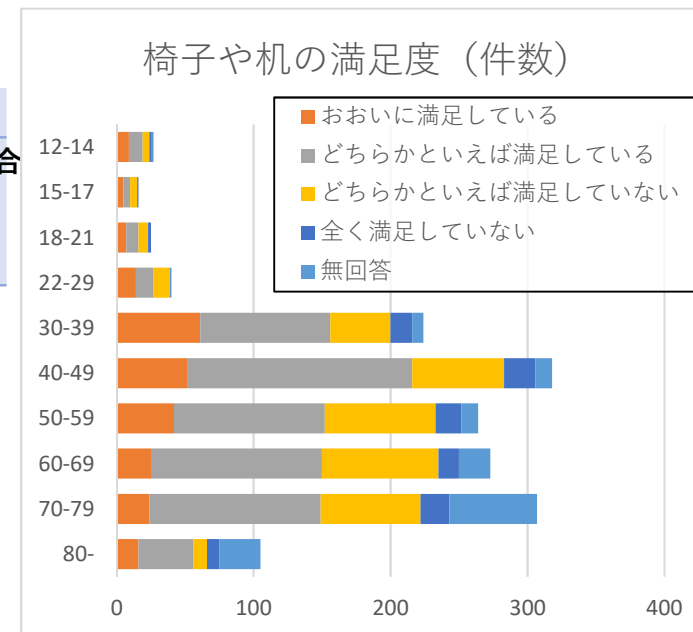


## 中央図書館構想（割合）



void

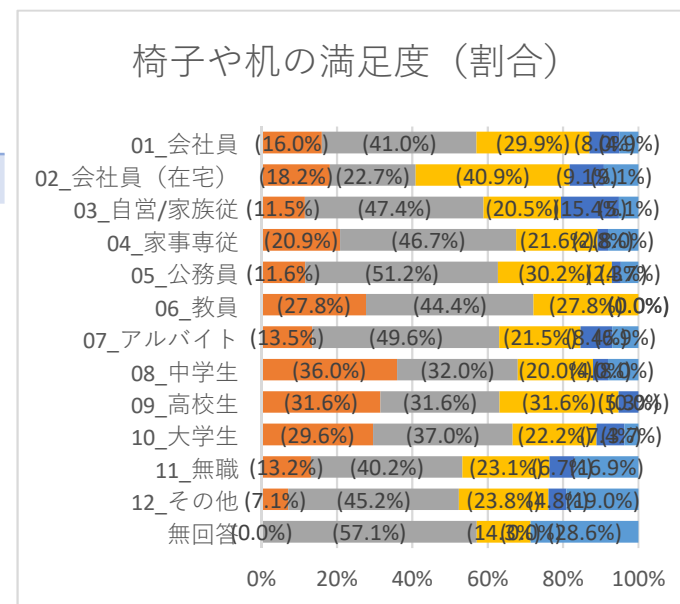
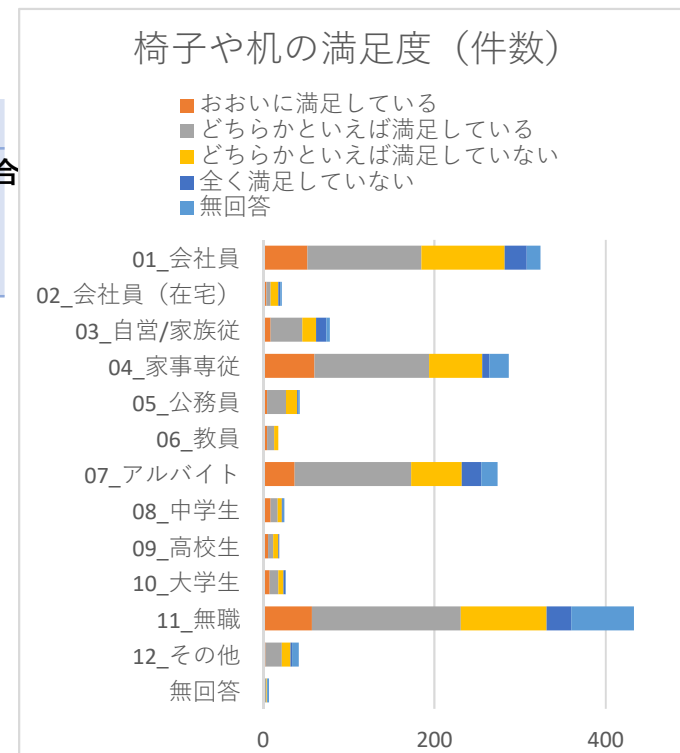
A1年齢	B5-4a閲覧用の椅子や机の数（満足度）										
	1		2		3		4		(空白)		全体の割合
	件数	割合	件数	割合	件数	割合	件数	割合	件数	割合	
12-14	9 (33.3%)	10 (37.0%)	5 (18.5%)	1 (3.7%)	2 (7.4%)	27 (100.0%)					
15-17	5 (31.3%)	5 (31.3%)	5 (31.3%)	1 (6.3%)	(0.0%)	16 (100.0%)					
18-21	7 (28.0%)	9 (36.0%)	7 (28.0%)	2 (8.0%)	(0.0%)	25 (100.0%)					
22-29	14 (35.0%)	13 (32.5%)	12 (30.0%)	(0.0%)	1 (2.5%)	40 (100.0%)					
30-39	61 (27.2%)	95 (42.4%)	44 (19.6%)	16 (7.1%)	8 (3.6%)	224 (100.0%)					
40-49	52 (16.4%)	164 (51.6%)	67 (21.1%)	23 (7.2%)	12 (3.8%)	318 (100.0%)					
50-59	42 (15.9%)	110 (41.7%)	81 (30.7%)	19 (7.2%)	12 (4.5%)	264 (100.0%)					
60-69	25 (9.2%)	125 (45.8%)	85 (31.1%)	15 (5.5%)	23 (8.4%)	273 (100.0%)					
70-79	24 (7.8%)	125 (40.7%)	73 (23.8%)	21 (6.8%)	64 (20.8%)	307 (100.0%)					
80-	16 (15.2%)	40 (38.1%)	10 (9.5%)	9 (8.6%)	30 (28.6%)	105 (100.0%)					
<b>総計</b>	<b>255 (15.9%)</b>	<b>696 (43.5%)</b>	<b>389 (24.3%)</b>	<b>107 (6.7%)</b>	<b>152 (9.5%)</b>	<b>1599 (100.0%)</b>					



A1：年齢  
 A2：職業  
 A3：居住地域  
 B5：閲覧用の椅子・机

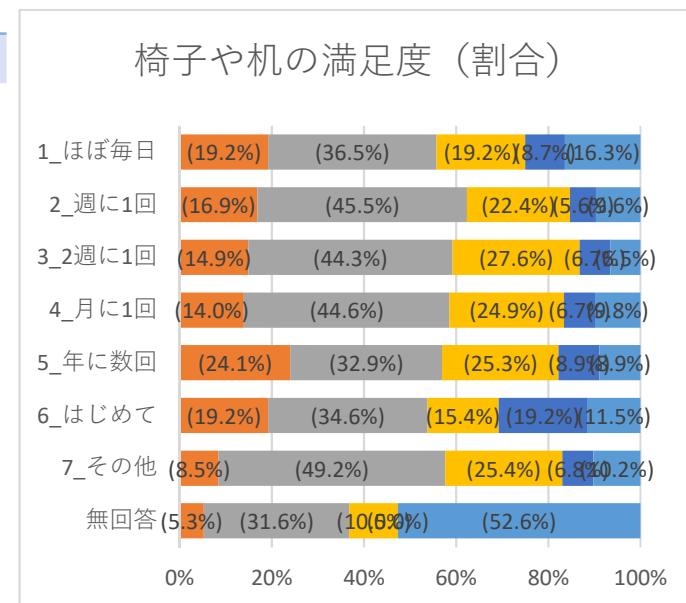
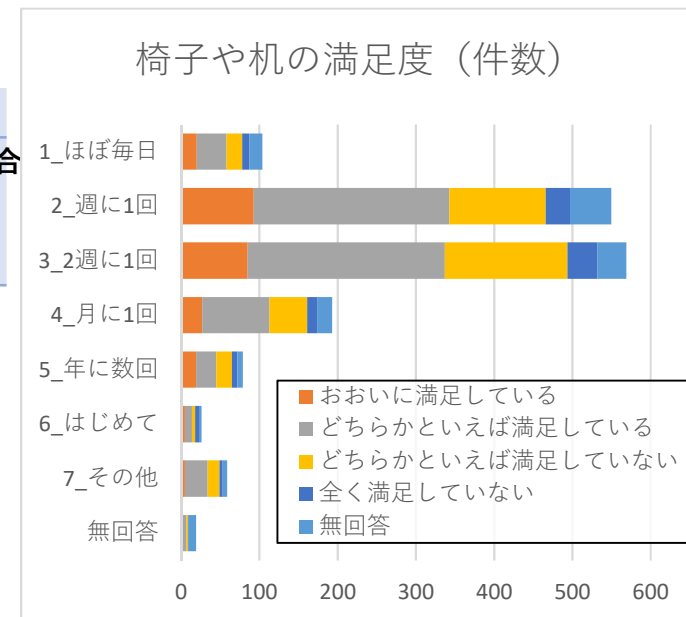
void

A2職業	B5-4a閲覧用の椅子や机の数（満足度）										
	1		2		3		4		(空白)		全体の割合
	件数	割合	件数	割合	件数	割合	件数	割合	件数	割合	
01_会社員	52 (16.0%)	133 (41.0%)	97 (29.9%)	26 (8.0%)	16 (4.9%)	324 (100.0%)					
02_会社員	4 (18.2%)	5 (22.7%)	9 (40.9%)	2 (9.1%)	2 (9.1%)	22 (100.0%)					
03_自営/家	9 (11.5%)	37 (47.4%)	16 (20.5%)	12 (15.4%)	4 (5.1%)	78 (100.0%)					
04_家事専従	60 (20.9%)	134 (46.7%)	62 (21.6%)	8 (2.8%)	23 (8.0%)	287 (100.0%)					
05_公務員	5 (11.6%)	22 (51.2%)	13 (30.2%)	1 (2.3%)	2 (4.7%)	43 (100.0%)					
06_教員	5 (27.8%)	8 (44.4%)	5 (27.8%)	(0.0%)	(0.0%)	18 (100.0%)					
07_アルバイト	37 (13.5%)	136 (49.6%)	59 (21.5%)	23 (8.4%)	19 (6.9%)	274 (100.0%)					
08_中学生	9 (36.0%)	8 (32.0%)	5 (20.0%)	1 (4.0%)	2 (8.0%)	25 (100.0%)					
09_高校生	6 (31.6%)	6 (31.6%)	6 (31.6%)	1 (5.3%)	(0.0%)	19 (100.0%)					
10_大学生	8 (29.6%)	10 (37.0%)	6 (22.2%)	2 (7.4%)	1 (3.7%)	27 (100.0%)					
11_無職	57 (13.2%)	174 (40.2%)	100 (23.1%)	29 (6.7%)	73 (16.9%)	433 (100.0%)					
12_その他	3 (7.1%)	19 (45.2%)	10 (23.8%)	2 (4.8%)	8 (19.0%)	42 (100.0%)					
無回答	(0.0%)	4 (57.1%)	1 (14.3%)	(0.0%)	2 (28.6%)	7 (100.0%)					
<b>総計</b>	<b>255 (15.9%)</b>	<b>696 (43.5%)</b>	<b>389 (24.3%)</b>	<b>107 (6.7%)</b>	<b>152 (9.5%)</b>	<b>1599 (100.0%)</b>					



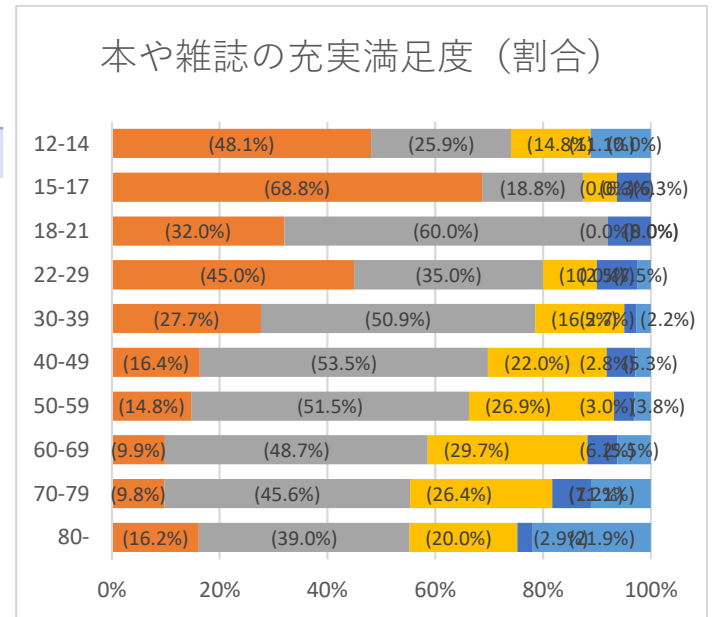
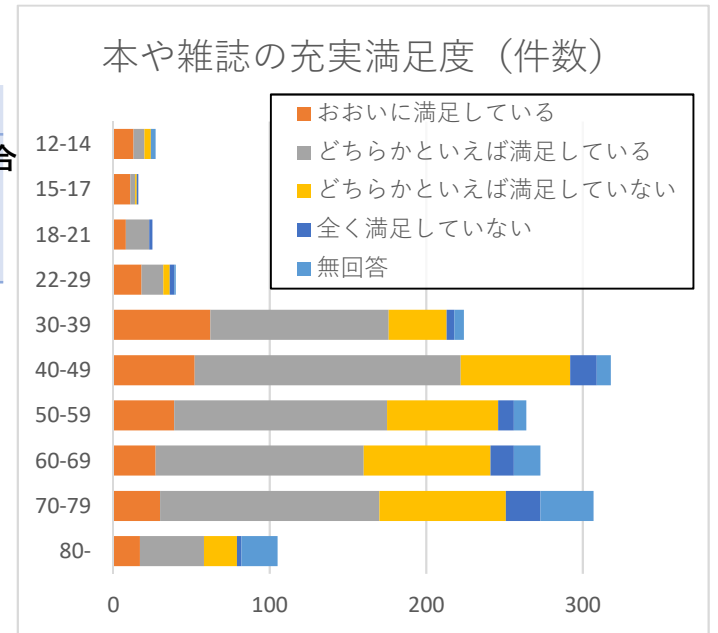
void

B1頻度	B5-4a閲覧用の椅子や机の数（満足度）										
	1		2		3		4		(空白)		全体の割合
	件数	割合	件数	割合	件数	割合	件数	割合	件数	割合	
1_ほぼ毎日	20	(19.2%)	38	(36.5%)	20	(19.2%)	9	(8.7%)	17	(16.3%)	104 (100.0%)
2_週に1回	93	(16.9%)	250	(45.5%)	123	(22.4%)	31	(5.6%)	53	(9.6%)	550 (100.0%)
3_2週に1回	85	(14.9%)	252	(44.3%)	157	(27.6%)	38	(6.7%)	37	(6.5%)	569 (100.0%)
4_月に1回	27	(14.0%)	86	(44.6%)	48	(24.9%)	13	(6.7%)	19	(9.8%)	193 (100.0%)
5_年に数回	19	(24.1%)	26	(32.9%)	20	(25.3%)	7	(8.9%)	7	(8.9%)	79 (100.0%)
6_はじめて	5	(19.2%)	9	(34.6%)	4	(15.4%)	5	(19.2%)	3	(11.5%)	26 (100.0%)
7_その他	5	(8.5%)	29	(49.2%)	15	(25.4%)	4	(6.8%)	6	(10.2%)	59 (100.0%)
無回答	1	(5.3%)	6	(31.6%)	2	(10.5%)		(0.0%)	10	(52.6%)	19 (100.0%)
<b>総計</b>	<b>255</b>	<b>(15.9%)</b>	<b>696</b>	<b>(43.5%)</b>	<b>389</b>	<b>(24.3%)</b>	<b>107</b>	<b>(6.7%)</b>	<b>152</b>	<b>(9.5%)</b>	<b>1599 (100.0%)</b>



void

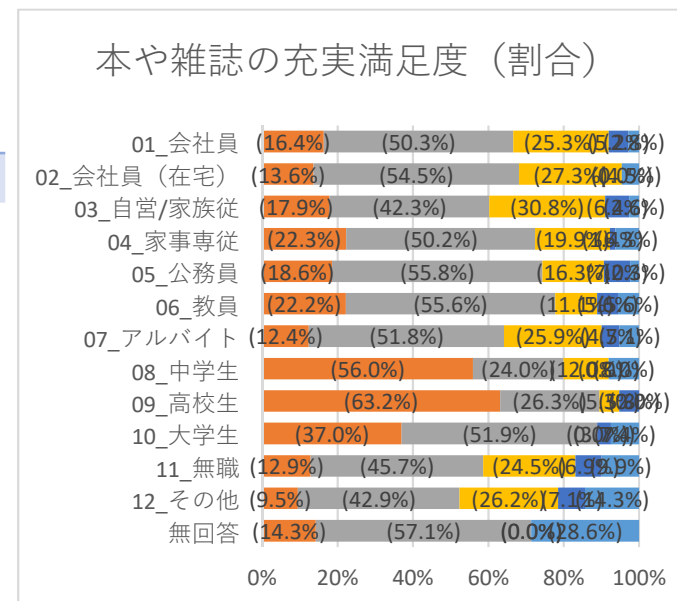
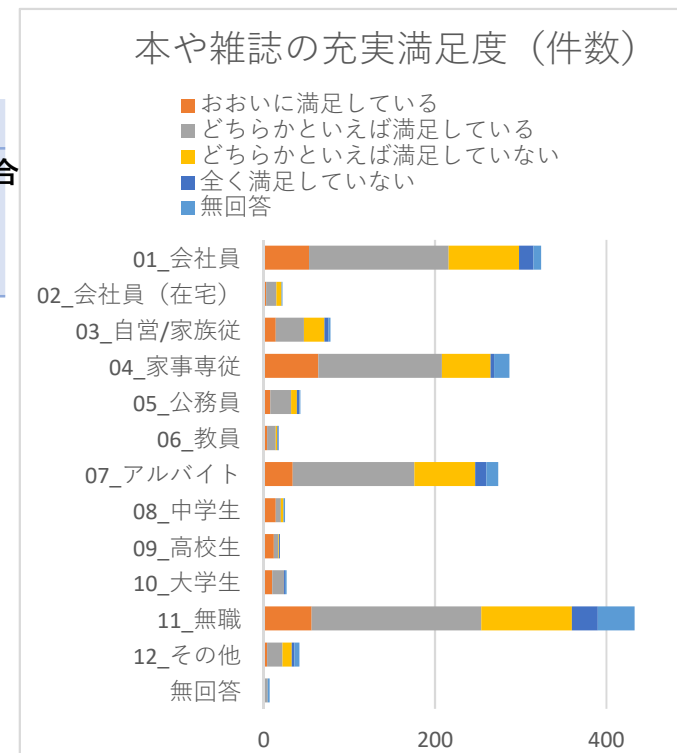
A1年齢	B5-6a読みたい本や雑誌の充実度（満足度）										
	1		2		3		4		(空白)		全体の割合
	件数	割合	件数	割合	件数	割合	件数	割合	件数	割合	
12-14	13 (48.1%)	7 (25.9%)	4 (14.8%)			3 (11.1%)					27 (100.0%)
15-17	11 (68.8%)	3 (18.8%)	1 (6.3%)	1 (6.3%)							16 (100.0%)
18-21	8 (32.0%)	15 (60.0%)		2 (8.0%)							25 (100.0%)
22-29	18 (45.0%)	14 (35.0%)	4 (10.0%)	3 (7.5%)	1 (2.5%)						40 (100.0%)
30-39	62 (27.7%)	114 (50.9%)	37 (16.5%)	5 (2.2%)	6 (2.7%)						224 (100.0%)
40-49	52 (16.4%)	170 (53.5%)	70 (22.0%)	17 (5.3%)	9 (2.8%)						318 (100.0%)
50-59	39 (14.8%)	136 (51.5%)	71 (26.9%)	10 (3.8%)	8 (3.0%)						264 (100.0%)
60-69	27 (9.9%)	133 (48.7%)	81 (29.7%)	15 (5.5%)	17 (6.2%)						273 (100.0%)
70-79	30 (9.8%)	140 (45.6%)	81 (26.4%)	22 (7.2%)	34 (11.1%)						307 (100.0%)
80-	17 (16.2%)	41 (39.0%)	21 (20.0%)	3 (2.9%)	23 (21.9%)						105 (100.0%)
<b>総計</b>	<b>277 (17.3%)</b>	<b>773 (48.3%)</b>	<b>370 (23.1%)</b>	<b>78 (4.9%)</b>	<b>101 (6.3%)</b>						<b>1599 (100.0%)</b>



A1：年齢  
 A2：職業  
 A3：居住地域  
 B5：読みたい本や雑誌

void

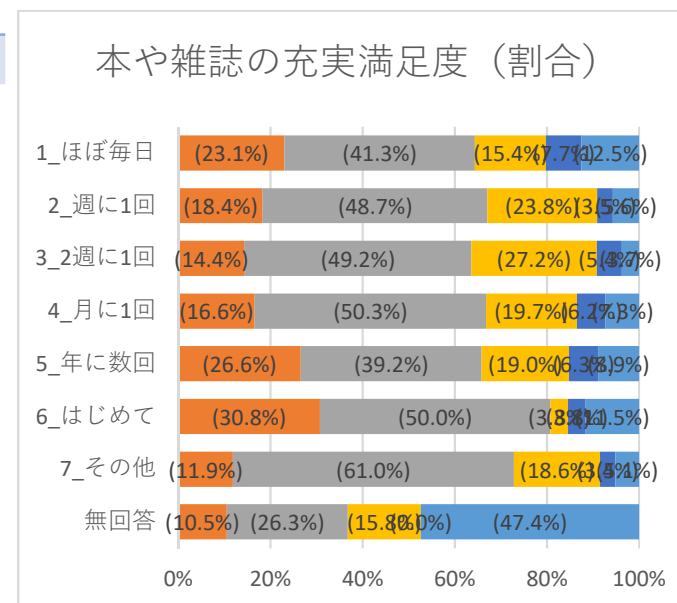
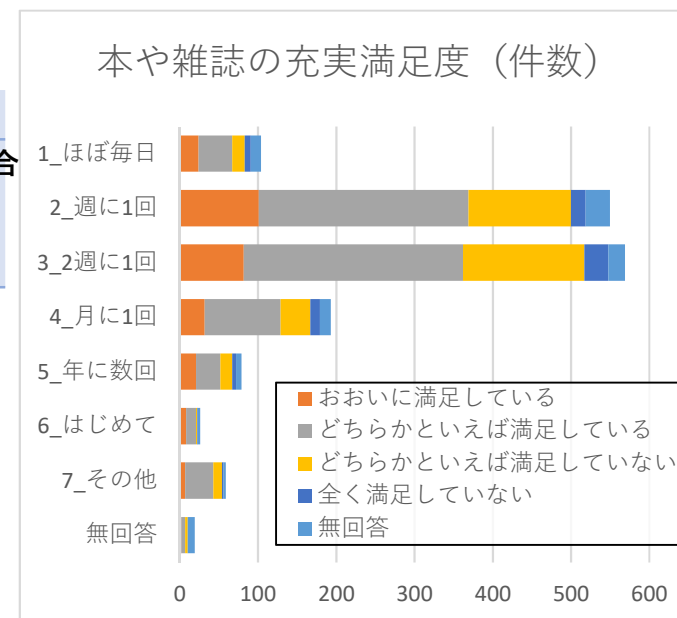
A2職業	B5-6a読みたい本や雑誌の充実度（満足度）										
	1		2		3		4		(空白)		全体の割合
	件数	割合	件数	割合	件数	割合	件数	割合	件数	割合	
01_会社員	53 (16.4%)	163 (50.3%)	82 (25.3%)	17 (5.2%)	9 (2.8%)	324 (100.0%)					
02_会社員 (在宅)	3 (13.6%)	12 (54.5%)	6 (27.3%)	0 (0.0%)	1 (4.5%)	22 (100.0%)					
03_自営/家族従	14 (17.9%)	33 (42.3%)	24 (30.8%)	5 (6.4%)	2 (2.6%)	78 (100.0%)					
04_家事専従	64 (22.3%)	144 (50.2%)	57 (19.9%)	4 (1.4%)	18 (6.3%)	287 (100.0%)					
05_公務員	8 (18.6%)	24 (55.8%)	7 (16.3%)	3 (7.0%)	1 (2.3%)	43 (100.0%)					
06_教員	4 (22.2%)	10 (55.6%)	2 (11.1%)	1 (5.6%)	1 (5.6%)	18 (100.0%)					
07_アルバイト	34 (12.4%)	142 (51.8%)	71 (25.9%)	13 (4.7%)	14 (5.1%)	274 (100.0%)					
08_中学生	14 (56.0%)	6 (24.0%)	3 (12.0%)	0 (0.0%)	2 (8.0%)	25 (100.0%)					
09_高校生	12 (63.2%)	5 (26.3%)	1 (5.3%)	1 (5.3%)	0 (0.0%)	19 (100.0%)					
10_大学生	10 (37.0%)	14 (51.9%)	0 (0.0%)	1 (3.7%)	2 (7.4%)	27 (100.0%)					
11_無職	56 (12.9%)	198 (45.7%)	106 (24.5%)	30 (6.9%)	43 (9.9%)	433 (100.0%)					
12_その他	4 (9.5%)	18 (42.9%)	11 (26.2%)	3 (7.1%)	6 (14.3%)	42 (100.0%)					
無回答	1 (14.3%)	4 (57.1%)	0 (0.0%)	0 (0.0%)	2 (28.6%)	7 (100.0%)					
<b>総計</b>	<b>277 (17.3%)</b>	<b>773 (48.3%)</b>	<b>370 (23.1%)</b>	<b>78 (4.9%)</b>	<b>101 (6.3%)</b>	<b>1599 (100.0%)</b>					





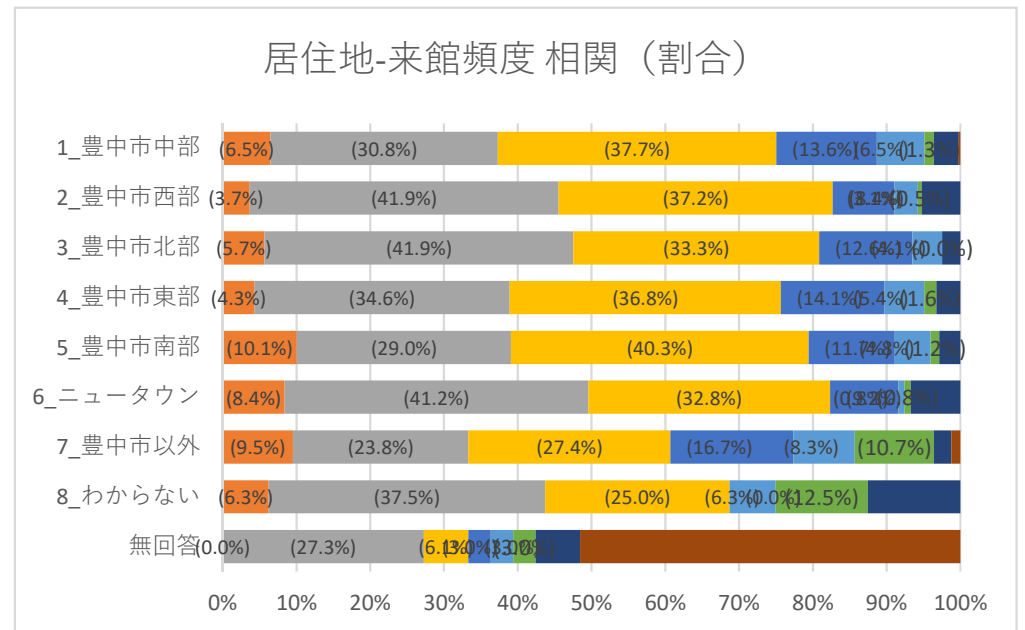
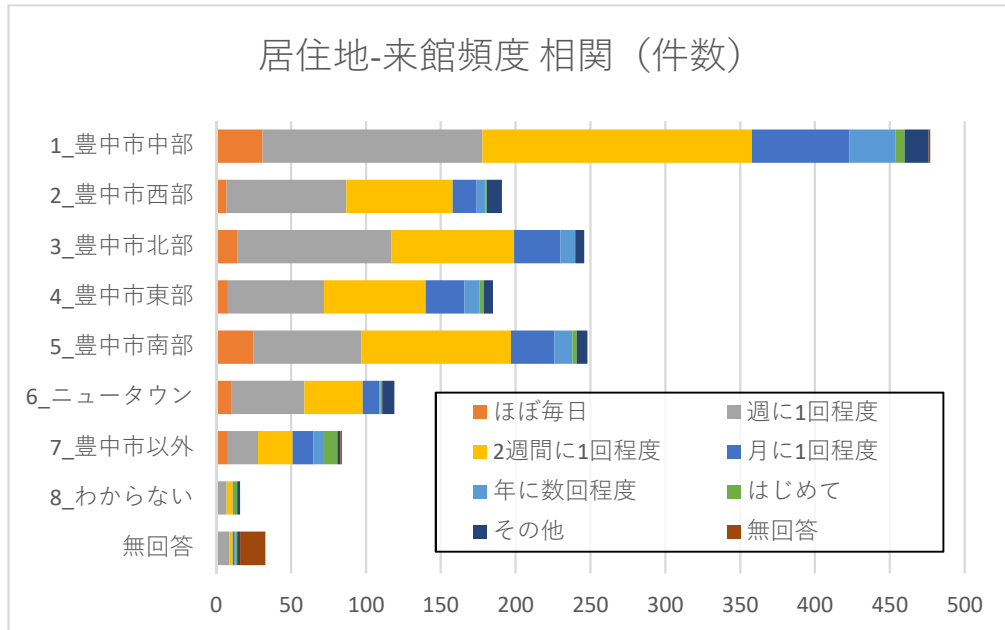
void

B1頻度	B5-6a読みたい本や雑誌の充実度（満足度）										
	1		2		3		4		(空白)		全体の割合
	件数	割合	件数	割合	件数	割合	件数	割合	件数	割合	
1_ほぼ毎日	24 (23.1%)	43 (41.3%)	16 (15.4%)	8 (7.7%)	13 (12.5%)	104 (100.0%)					
2_週に1回	101 (18.4%)	268 (48.7%)	131 (23.8%)	19 (3.5%)	31 (5.6%)	550 (100.0%)					
3_2週に1回	82 (14.4%)	280 (49.2%)	155 (27.2%)	31 (5.4%)	21 (3.7%)	569 (100.0%)					
4_月に1回	32 (16.6%)	97 (50.3%)	38 (19.7%)	12 (6.2%)	14 (7.3%)	193 (100.0%)					
5_年に数回	21 (26.6%)	31 (39.2%)	15 (19.0%)	5 (6.3%)	7 (8.9%)	79 (100.0%)					
6_はじめて	8 (30.8%)	13 (50.0%)	1 (3.8%)	1 (3.8%)	3 (11.5%)	26 (100.0%)					
7_その他	7 (11.9%)	36 (61.0%)	11 (18.6%)	2 (3.4%)	3 (5.1%)	59 (100.0%)					
無回答	2 (10.5%)	5 (26.3%)	3 (15.8%)	0 (0.0%)	9 (47.4%)	19 (100.0%)					
<b>総計</b>	<b>277 (17.3%)</b>	<b>773 (48.3%)</b>	<b>370 (23.1%)</b>	<b>78 (4.9%)</b>	<b>101 (6.3%)</b>	<b>1599 (100.0%)</b>					



void

A3居住地	B1頻度																全体の割合	
	1		2		3		4		5		6		7		(空白)			
	件数	割合	件数	割合	件数	割合	件数	割合	件数	割合	件数	割合	件数	割合	件数	割合		
1_豊中市中部	31	(6.5%)	147	(30.8%)	180	(37.7%)	65	(13.6%)	31	(6.5%)	6	(1.3%)	16	(3.4%)	1	(0.2%)	477	(100.0%)
2_豊中市西部	7	(3.7%)	80	(41.9%)	71	(37.2%)	16	(8.4%)	6	(3.1%)	1	(0.5%)	10	(5.2%)		(0.0%)	191	(100.0%)
3_豊中市北部	14	(5.7%)	103	(41.9%)	82	(33.3%)	31	(12.6%)	10	(4.1%)		(0.0%)	6	(2.4%)		(0.0%)	246	(100.0%)
4_豊中市東部	8	(4.3%)	64	(34.6%)	68	(36.8%)	26	(14.1%)	10	(5.4%)	3	(1.6%)	6	(3.2%)		(0.0%)	185	(100.0%)
5_豊中市南部	25	(10.1%)	72	(29.0%)	100	(40.3%)	29	(11.7%)	12	(4.8%)	3	(1.2%)	7	(2.8%)		(0.0%)	248	(100.0%)
6_ニュータウン	10	(8.4%)	49	(41.2%)	39	(32.8%)	11	(9.2%)	1	(0.8%)	1	(0.8%)	8	(6.7%)		(0.0%)	119	(100.0%)
7_豊中市以外	8	(9.5%)	20	(23.8%)	23	(27.4%)	14	(16.7%)	7	(8.3%)	9	(10.7%)	2	(2.4%)	1	(1.2%)	84	(100.0%)
8_わからない	1	(6.3%)	6	(37.5%)	4	(25.0%)		(0.0%)	1	(6.3%)	2	(12.5%)	2	(12.5%)		(0.0%)	16	(100.0%)
無回答		(0.0%)	9	(27.3%)	2	(6.1%)	1	(3.0%)	1	(3.0%)	1	(3.0%)	2	(6.1%)	17	(51.5%)	33	(100.0%)
<b>総計</b>	<b>104</b>	<b>(6.5%)</b>	<b>550</b>	<b>(34.4%)</b>	<b>569</b>	<b>(35.6%)</b>	<b>193</b>	<b>(12.1%)</b>	<b>79</b>	<b>(4.9%)</b>	<b>26</b>	<b>(1.6%)</b>	<b>59</b>	<b>(3.7%)</b>	<b>19</b>	<b>(1.2%)</b>	<b>1599</b>	<b>(100.0%)</b>



A3居住地	B2来館目的																						合計								
	貸出返却		本を読む		雑誌読む		新聞読む		自分で調		レファ		行事参加		ボランテ		集会室		その他		目的なし			無回答							
	件数	割合	件数	割合	件数	割合	件数	割合	件数	割合	件数	割合	件数	割合	件数	割合	件数	割合	件数	割合	件数	割合		件数	割合						
1_豊中市中部	399	83.6%	128	26.8%	74	15.5%	39	8.2%	49	10.3%	12	2.5%	1	0.2%	6	1.3%	3	0.6%	13	2.7%	0	0.0%	1	0.2%							477
2_豊中市西部	171	89.5%	30	15.7%	19	9.9%	10	5.2%	10	5.2%	6	3.1%	1	0.5%	3	1.6%	2	1.0%	6	3.1%	1	0.5%	0	0.0%							191
3_豊中市北部	209	85.0%	71	28.9%	42	17.1%	16	6.5%	25	10.2%	6	2.4%	2	0.8%	2	0.8%	3	1.2%	4	1.6%	2	0.8%	0	0.0%							246
4_豊中市東部	165	89.2%	42	22.7%	25	13.5%	8	4.3%	8	4.3%	2	1.1%	1	0.5%	0	0.0%	0	0.0%	7	3.8%	0	0.0%	0	0.0%							185
5_豊中市南部	204	82.3%	66	26.6%	37	14.9%	18	7.3%	14	5.6%	4	1.6%	3	1.2%	1	0.4%	2	0.8%	13	5.2%	1	0.4%	0	0.0%							248
6_ニュータウン	93	78.2%	42	35.3%	16	13.4%	10	8.4%	15	12.6%	2	1.7%	0	0.0%	0	0.0%	0	0.0%	4	3.4%	1	0.8%	0	0.0%							119
7_豊中市以外	47	56.0%	32	38.1%	25	29.8%	6	7.1%	15	17.9%	0	0.0%	0	0.0%	0	0.0%	2	2.4%	4	4.8%	1	1.2%	0	0.0%							84
8_わからない	11	68.8%	7	43.8%	3	18.8%	1	6.3%	2	12.5%	2	12.5%	0	0.0%	0	0.0%	1	6.3%	2	12.5%	0	0.0%	0	0.0%							16
無回答	12	36.4%	6	18.2%	3	9.1%	0	0.0%	2	6.1%	1	3.0%	0	0.0%	0	0.0%	0	0.0%	0	0.0%	1	3.0%	0	0.0%	16	48.5%					33
<b>総計</b>	<b>1311</b>	<b>82.0%</b>	<b>424</b>	<b>26.5%</b>	<b>244</b>	<b>15.3%</b>	<b>108</b>	<b>6.8%</b>	<b>140</b>	<b>8.8%</b>	<b>35</b>	<b>2.2%</b>	<b>8</b>	<b>0.5%</b>	<b>12</b>	<b>0.8%</b>	<b>13</b>	<b>0.8%</b>	<b>54</b>	<b>3.4%</b>	<b>6</b>	<b>0.4%</b>	<b>17</b>	<b>1.1%</b>			<b>1599</b>				

